



Lowrey organs

CORONATION

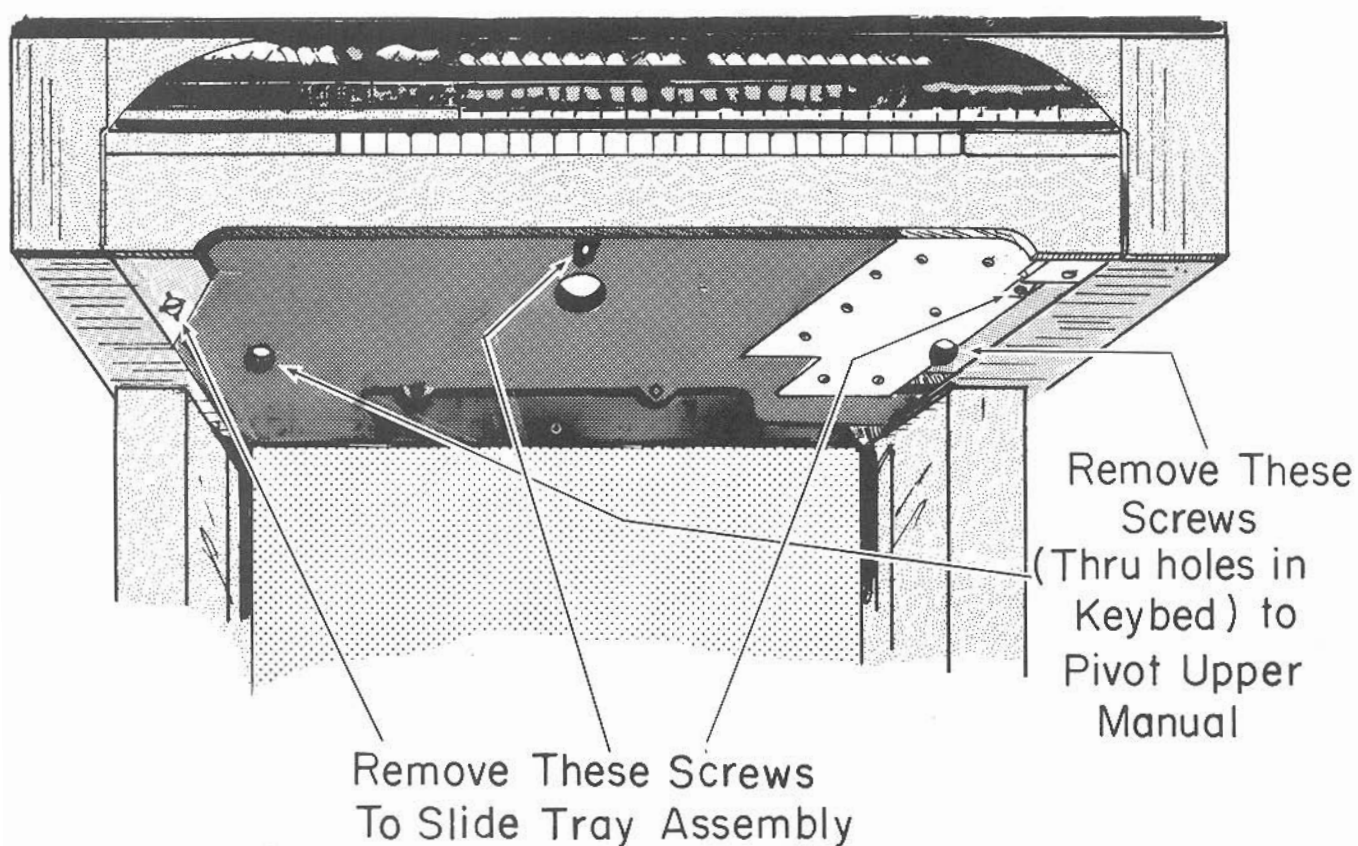
SYMPHONIC CITATION THEATRE /
CONTEMPO 80

TABLE OF CONTENTS

PHANTOM VIEWS, PHOTOGRAPHS & PICTORIALS

Disassembly Notice	1
Board Location Pictorial	2
DC Control Board	3
Tone Generator and Keyer Board.....	4
Diode Readout Board	6
Flute Filter Board	8
R/S Quality Control Board	10
AOC and Keyer Board	12
Rhythm Clock Board	14
Instrumentation Board.....	16
Chord Function Generator Board.....	18
Magic Genie 4' TOS, AOC & Oscillator Board	20
Lower Keyswitch Board.....	22
Chorus Modulator Board	24
Golden Harp Board	26
Flute Preset Board	28
Orchestral Symphonizer Latch & Control Board	30
Orchestral Symphonizer Keying Board	32
Orchestral Symphonizer QC Board	34
Power Supply Board	36
Amplifier Board	37
Crossover Board	38
Power Supply (Top View)	39
Power Supply (Bottom View)	40

IMPORTANT: Before Printed Circuit Board Trays can be Lowered or Upper Manual can be Pivoted Upward Tray Assembly must be Slid Back



TRAY NO.1 UP

FLUTE FILTER
BOARD

ORCHESTRAL
SYMPHONIZER
Q.C.
BOARD

REED STRING
Q.C.
BOARD

TRAY NO. 1 DOWN

D.C. CONTROL
BOARD

FLUTE PRESET
BOARD

RHYTHM CLOCK
BOARD

C F G
BOARD

RHYTHM
INSTRUMENTATION
BOARD

MAGIC GENIE 4'
TOS AOC & OSC

TRAY NO.2 UP

GOLDEN
HARP
BOARD

ORCH.
SYMP.
LATCH &
CONTROL
BOARD

ORCHESTRAL
SYMPHONIZER
KEYER BOARD

CHORUS
MODULATOR
BOARD

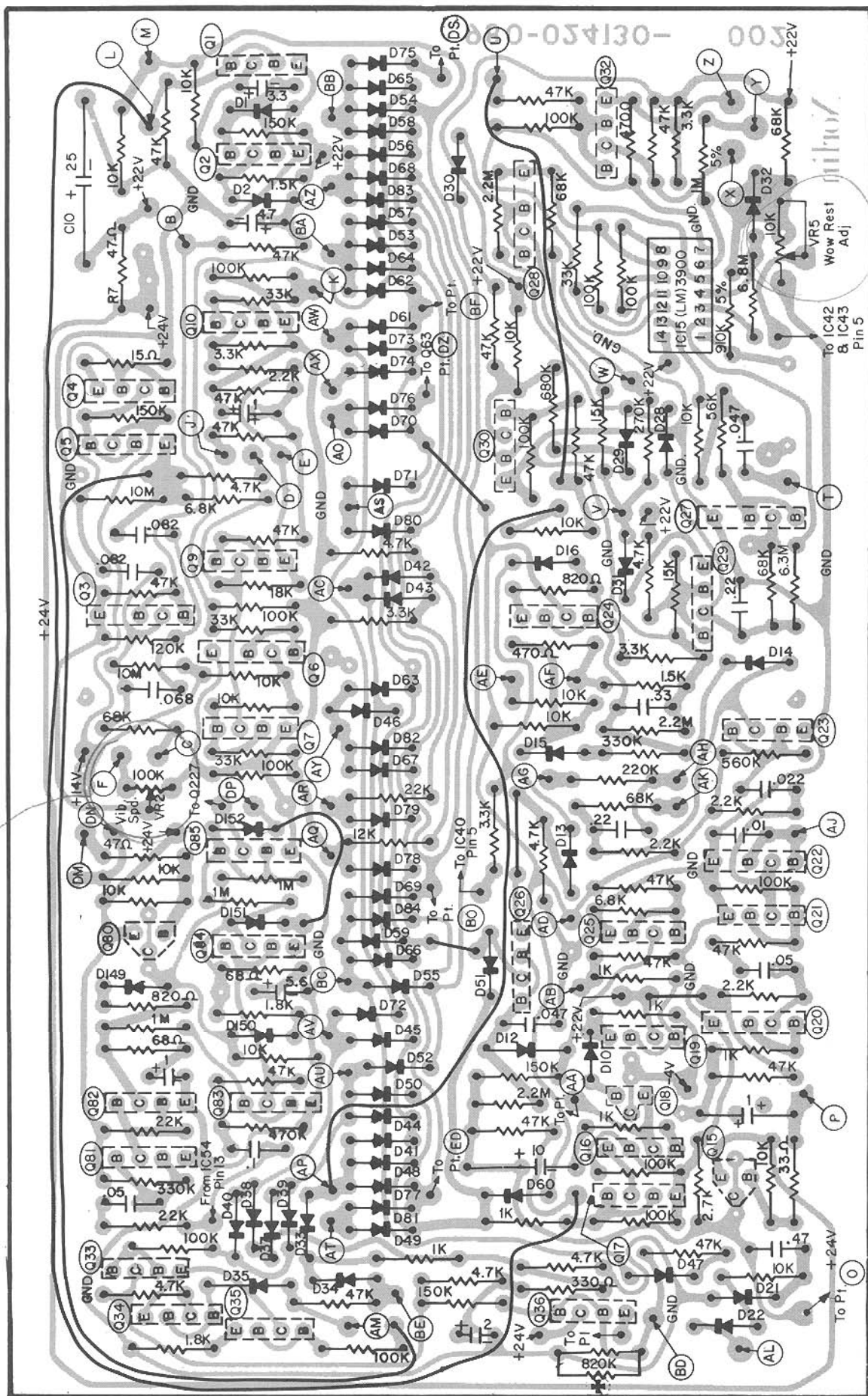
TRAY NO. 2 DOWN

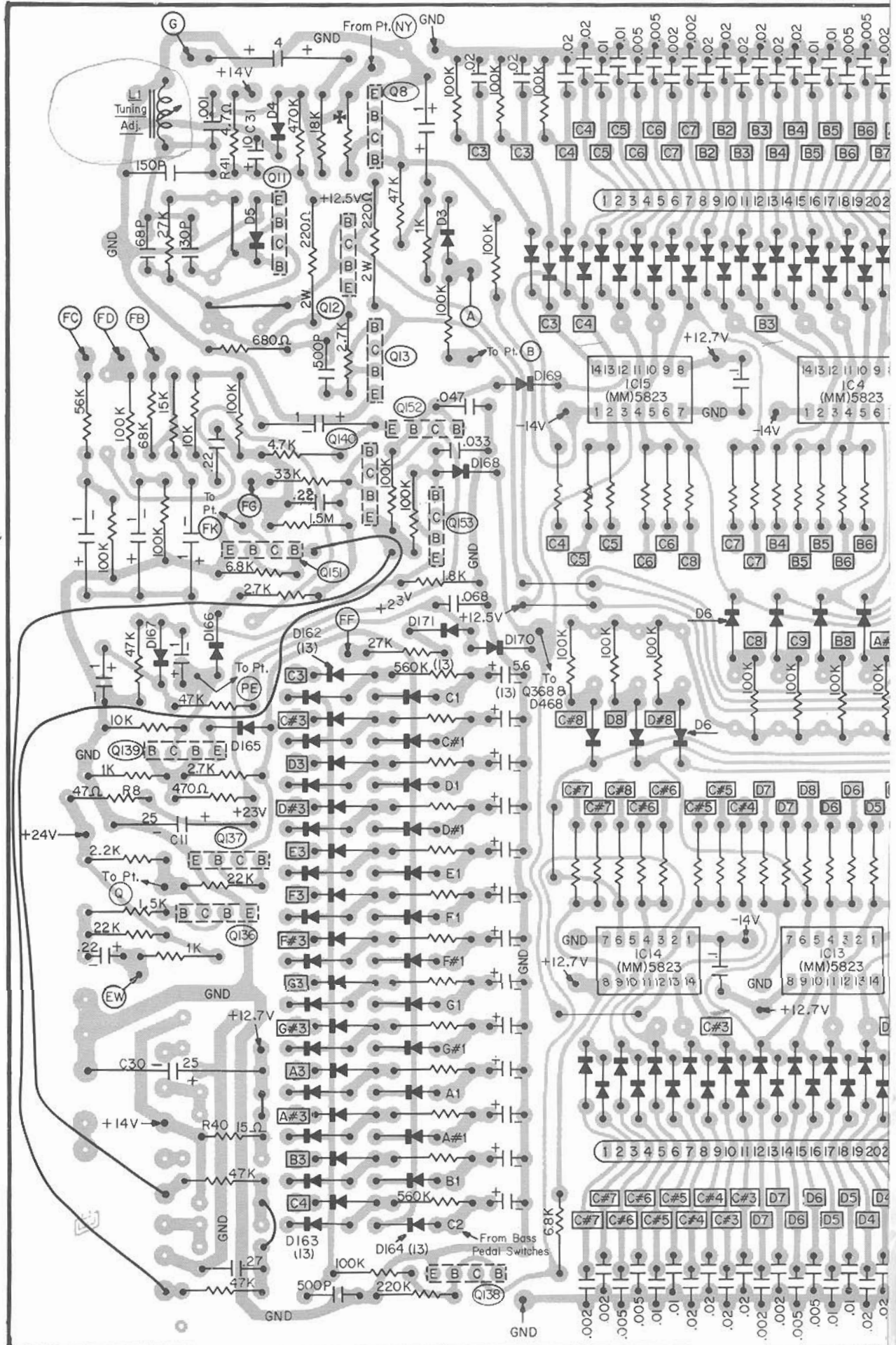
DIODE READOUT
BOARD

TONE GENERATOR
AND KEYER BOARD

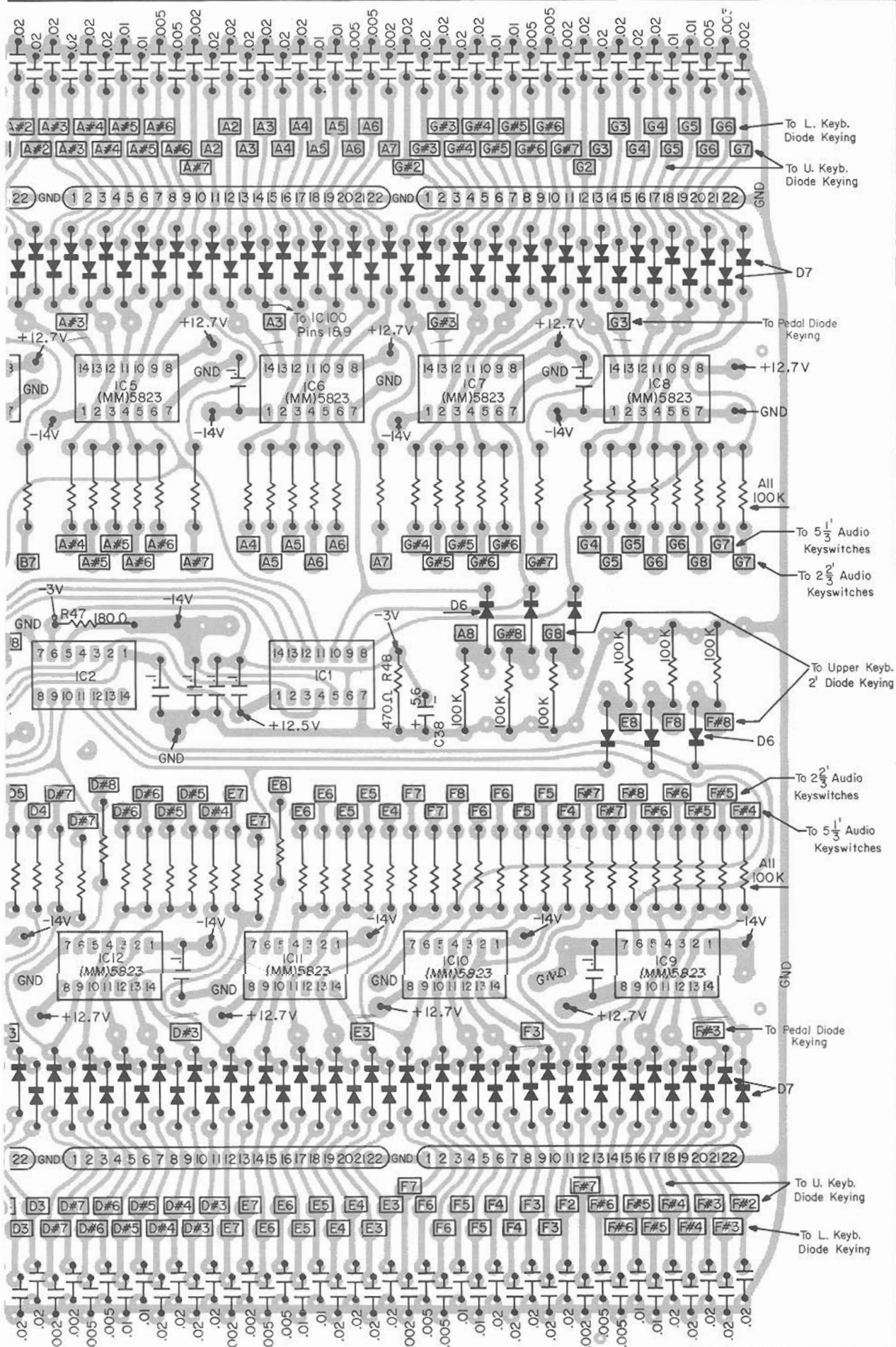
AOC &
KEYER BOARD

D.C. CONTROL BOARD





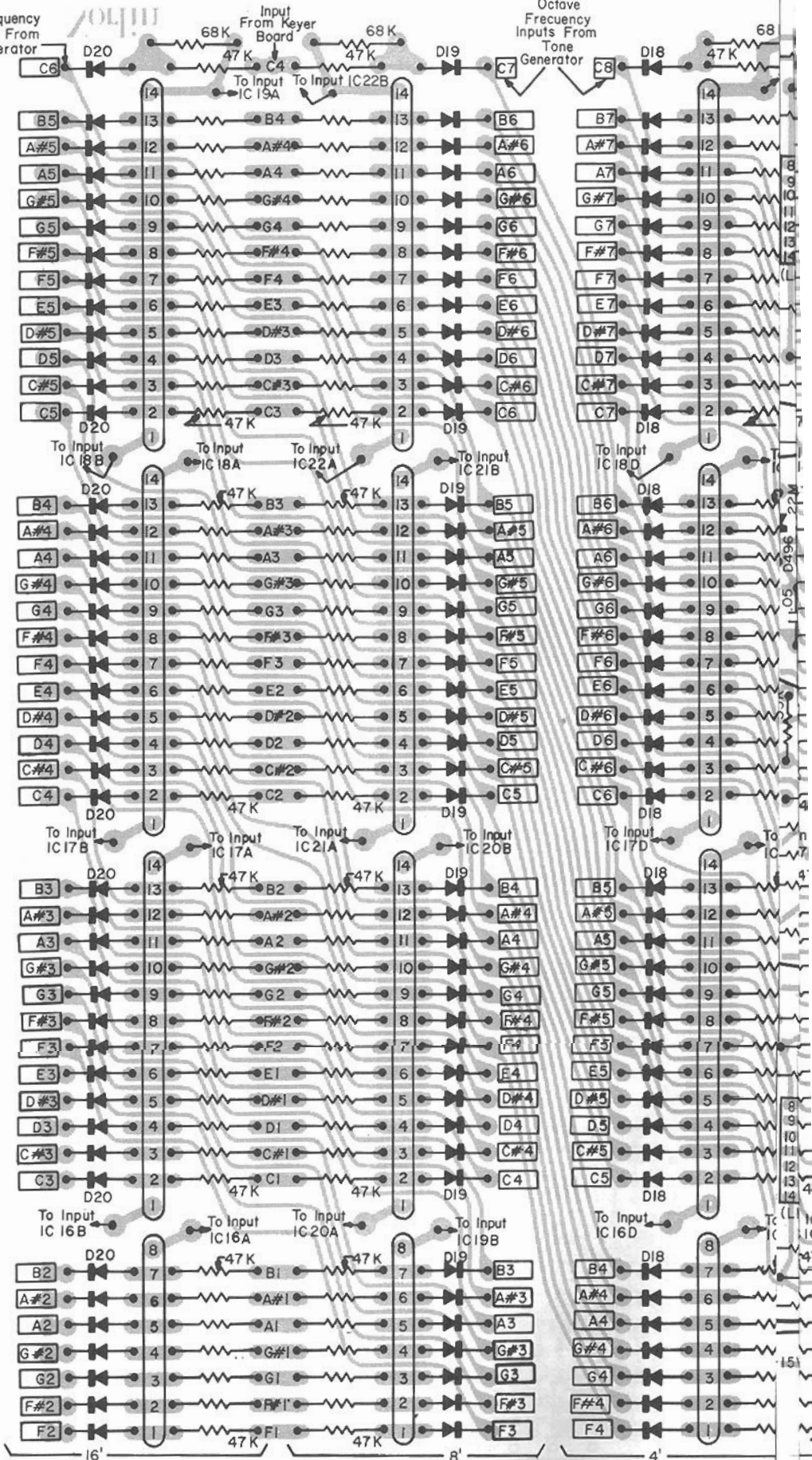
AND KEYSER BOARD



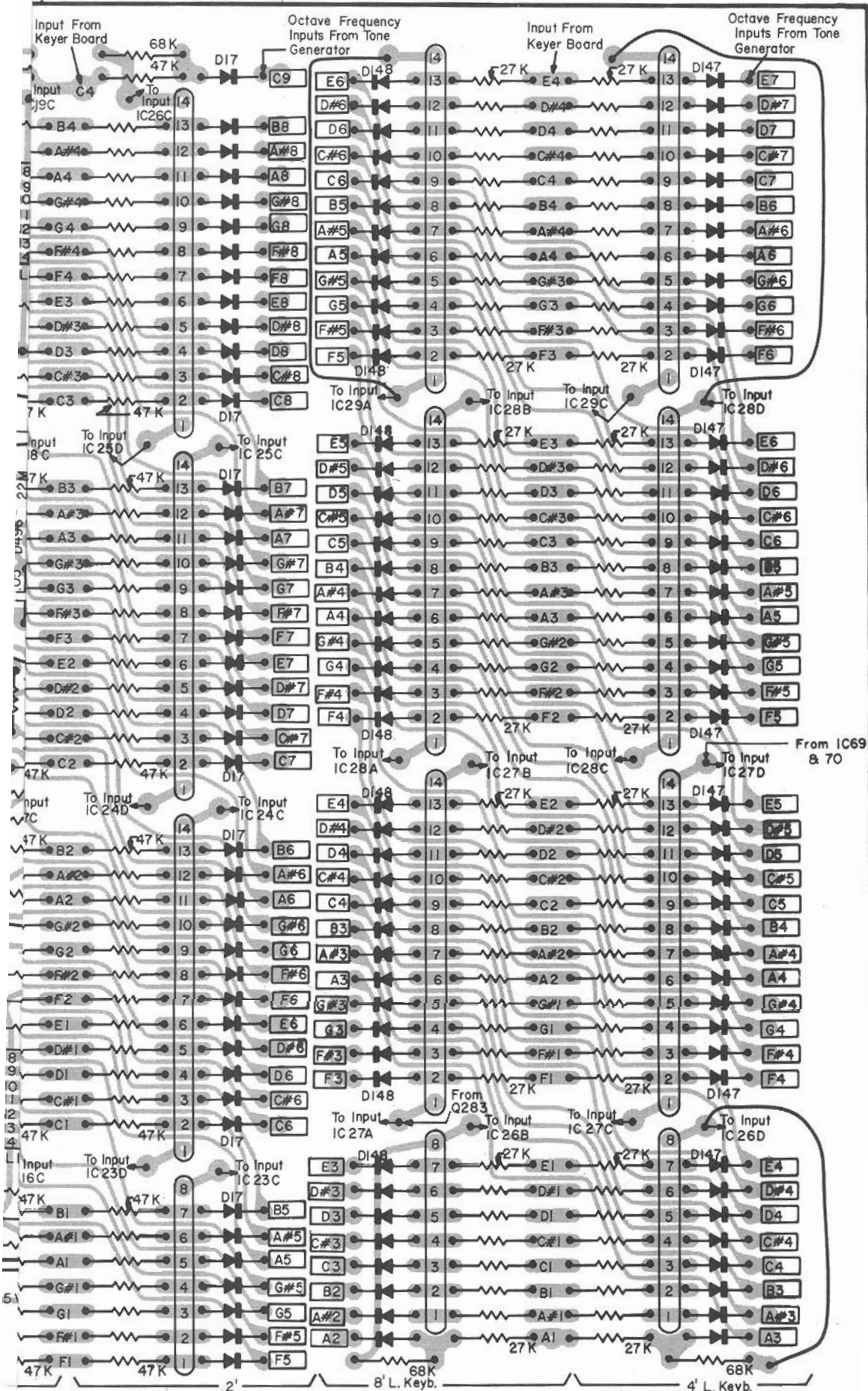
Octave Frequency
Inputs From
Tone Generator

Input
From Keyer
Board

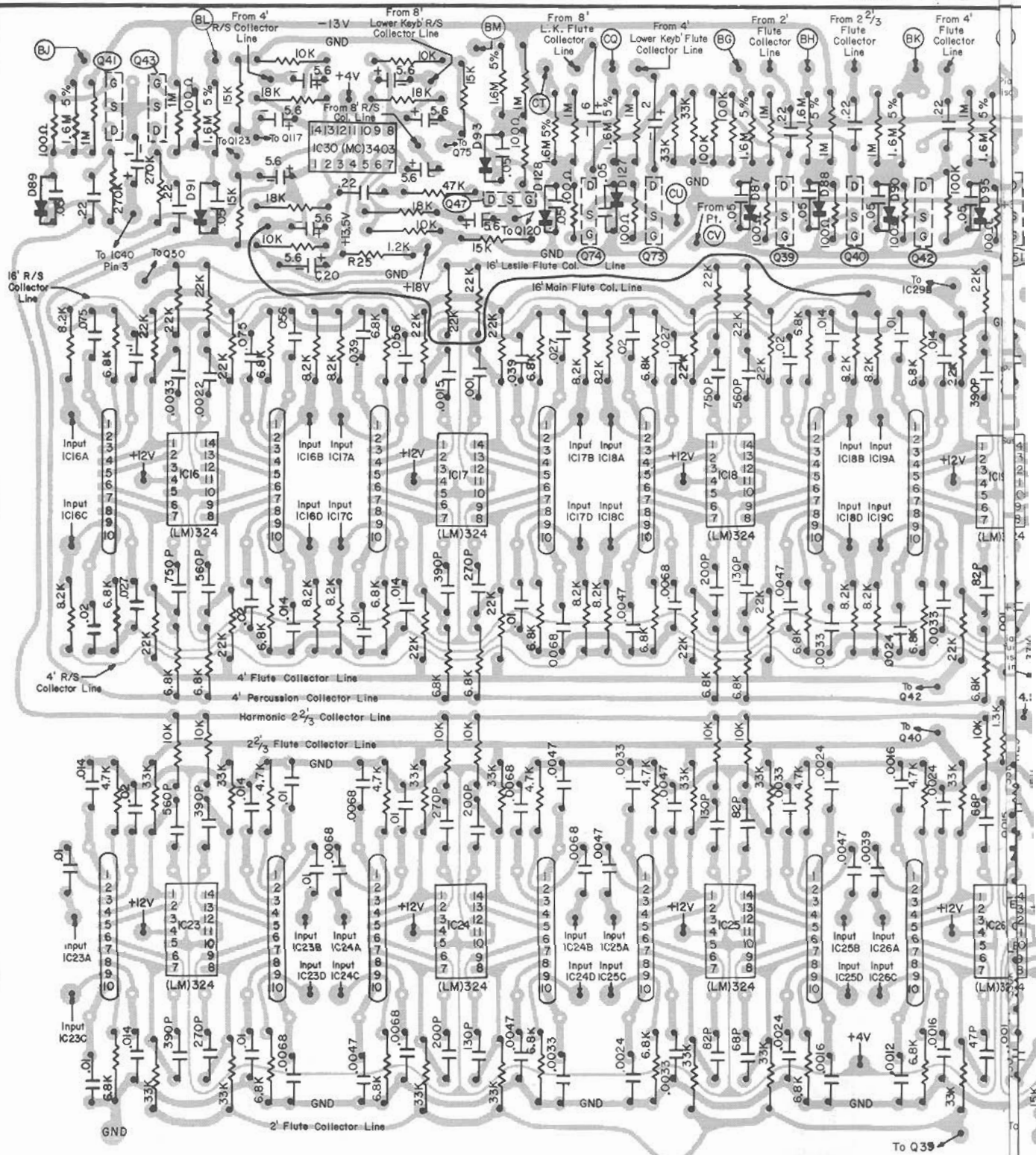
Octave Frequency
Inputs From
Tone Generator



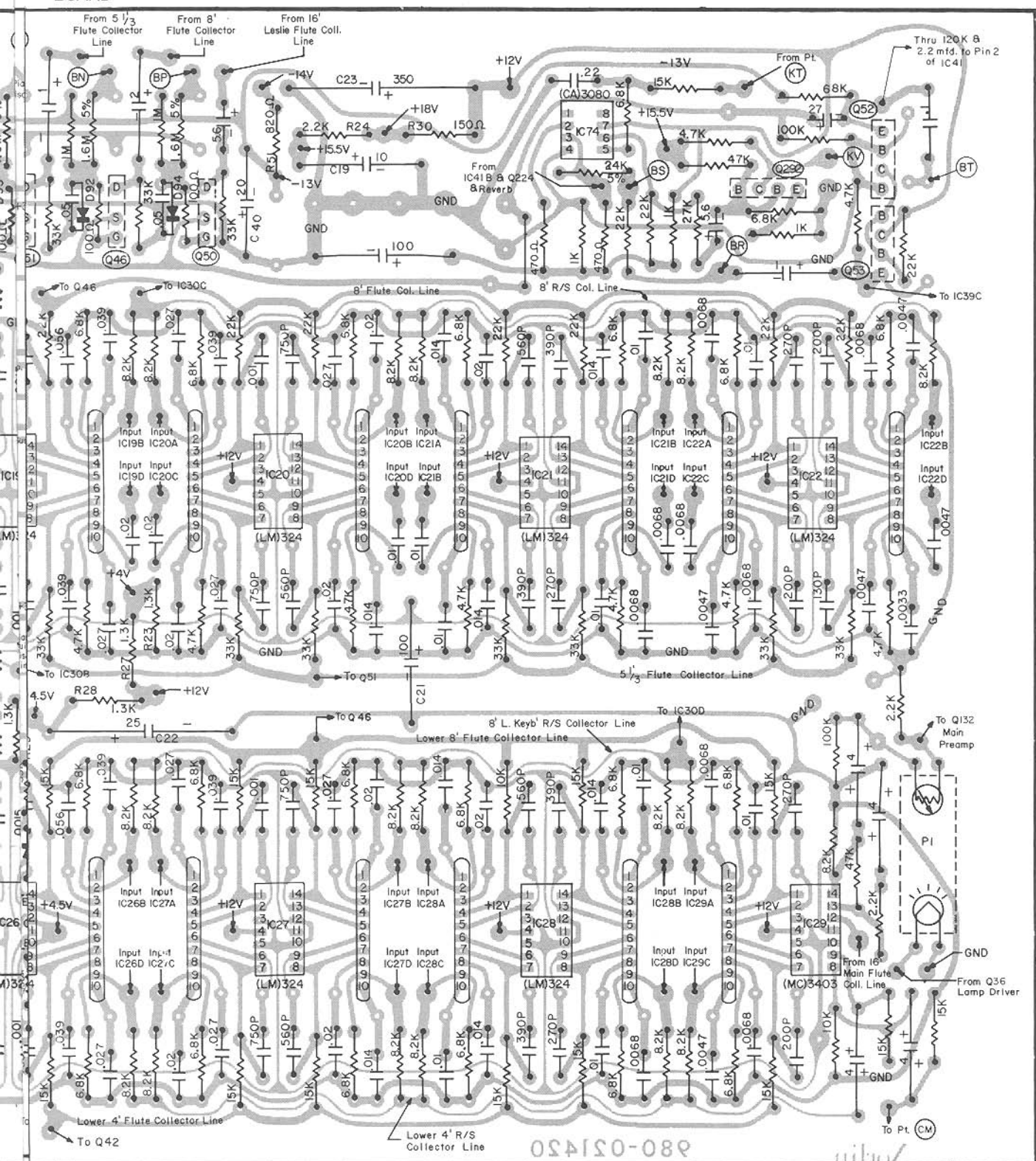
EUT BOARD

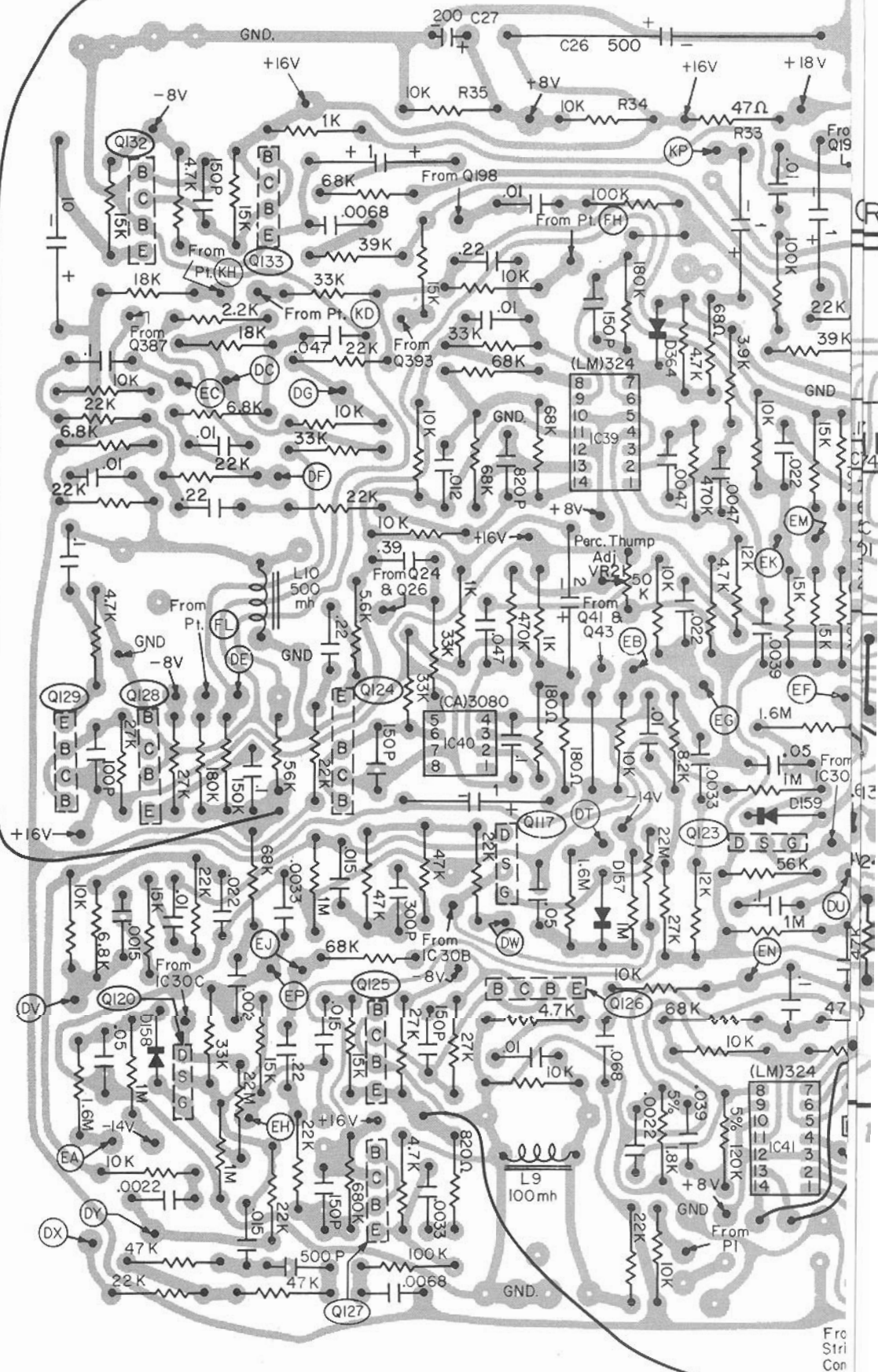


FLUTE FILTER



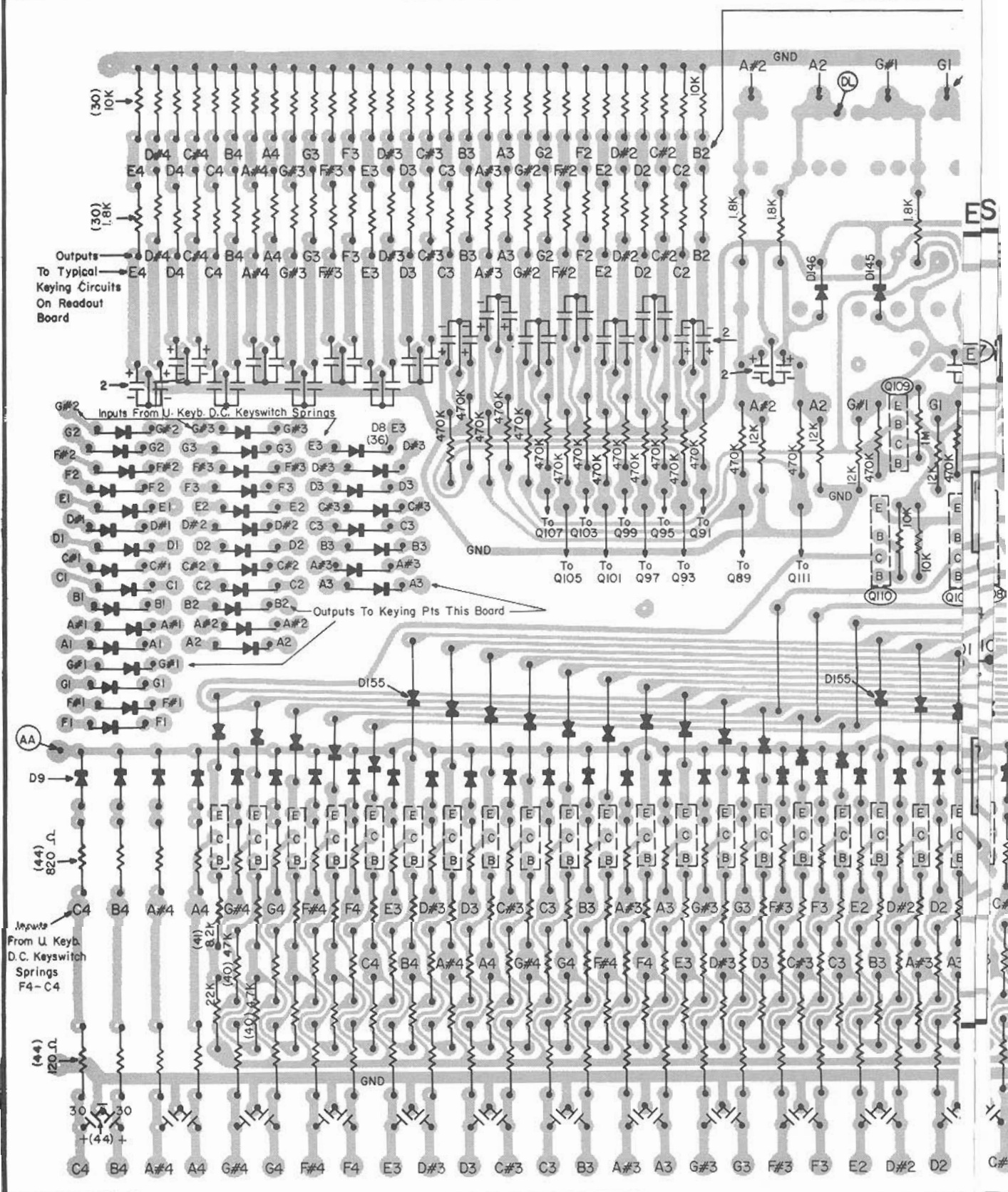
BOARD



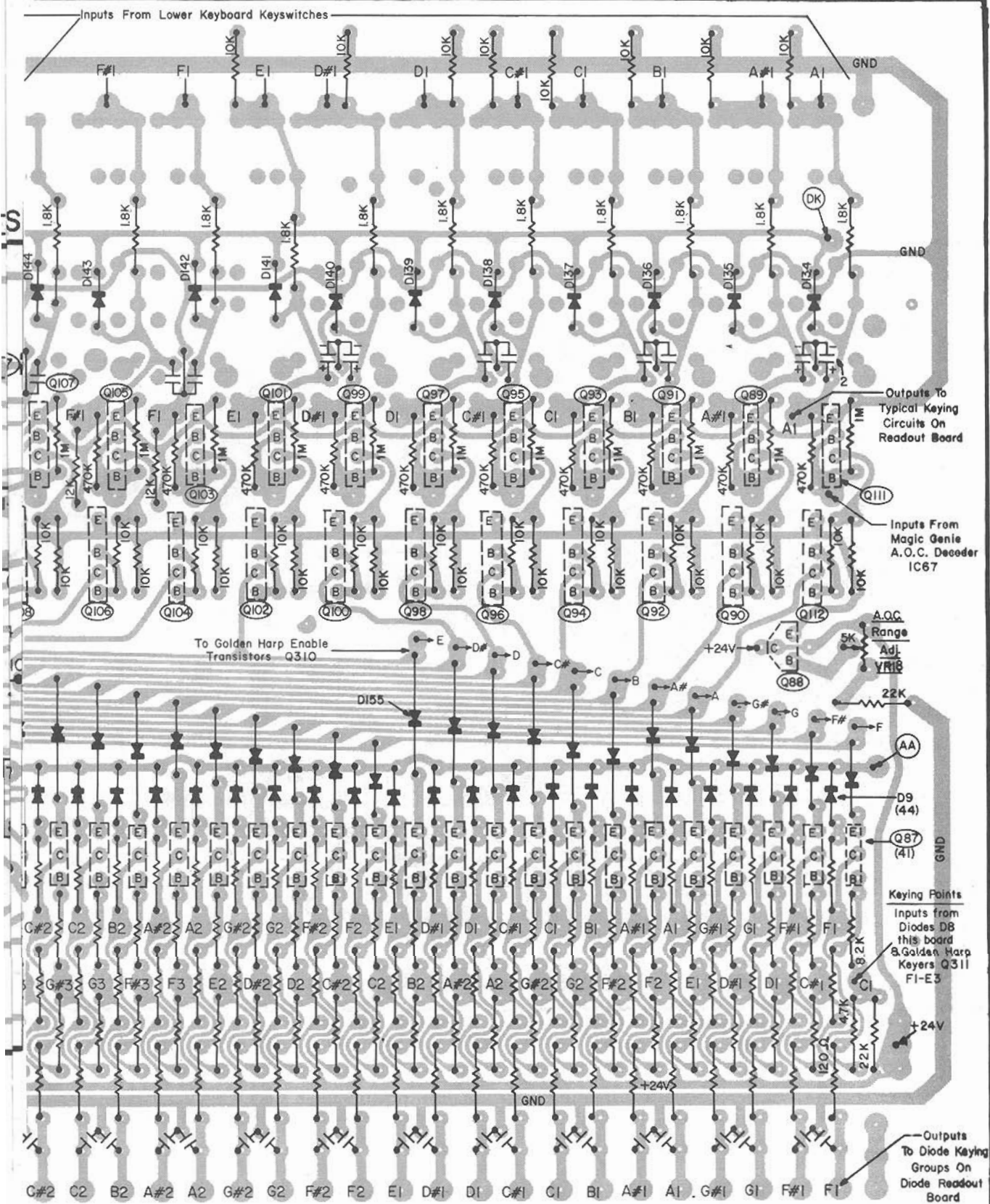


~~200-044150-000~~





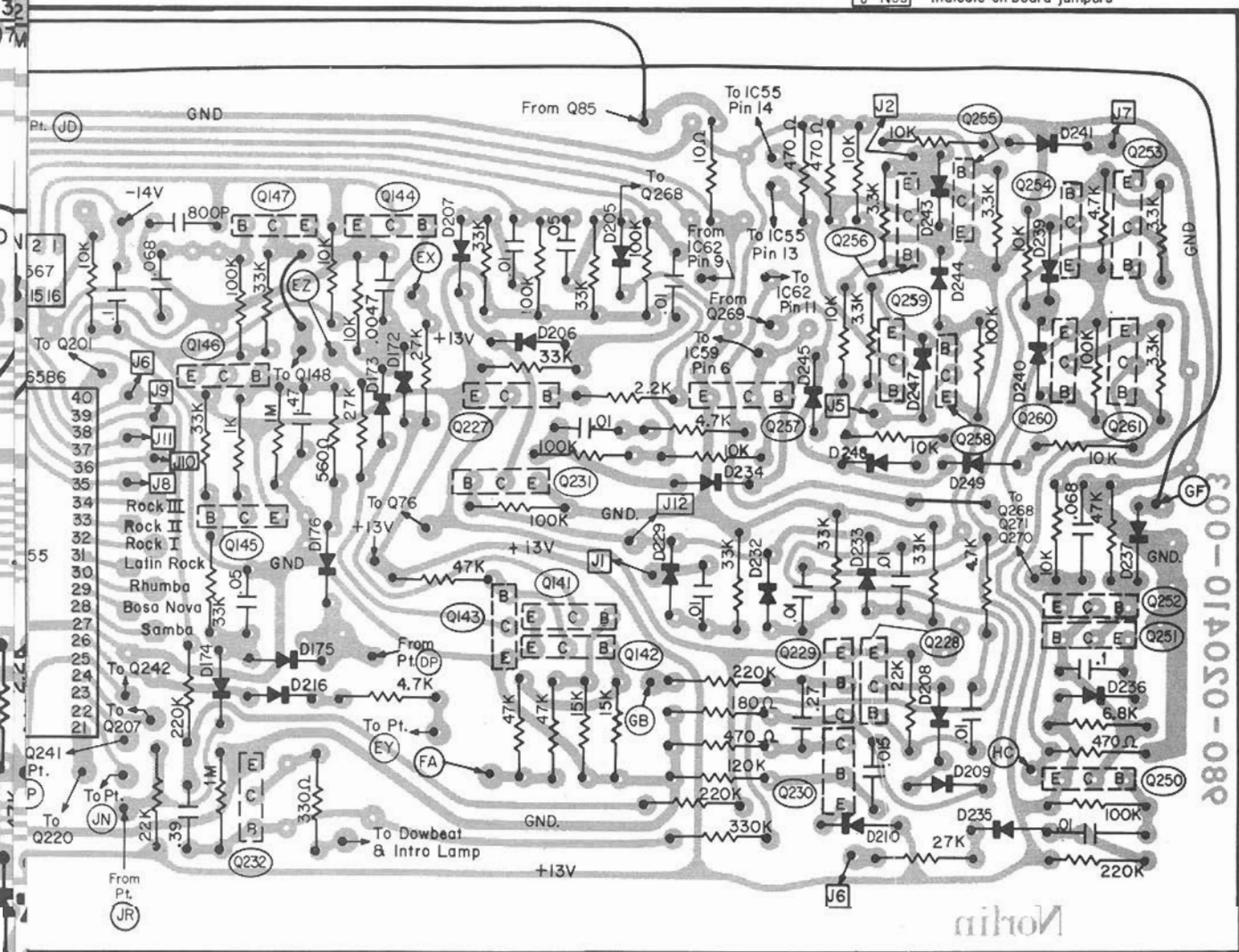
KEYER BOARD

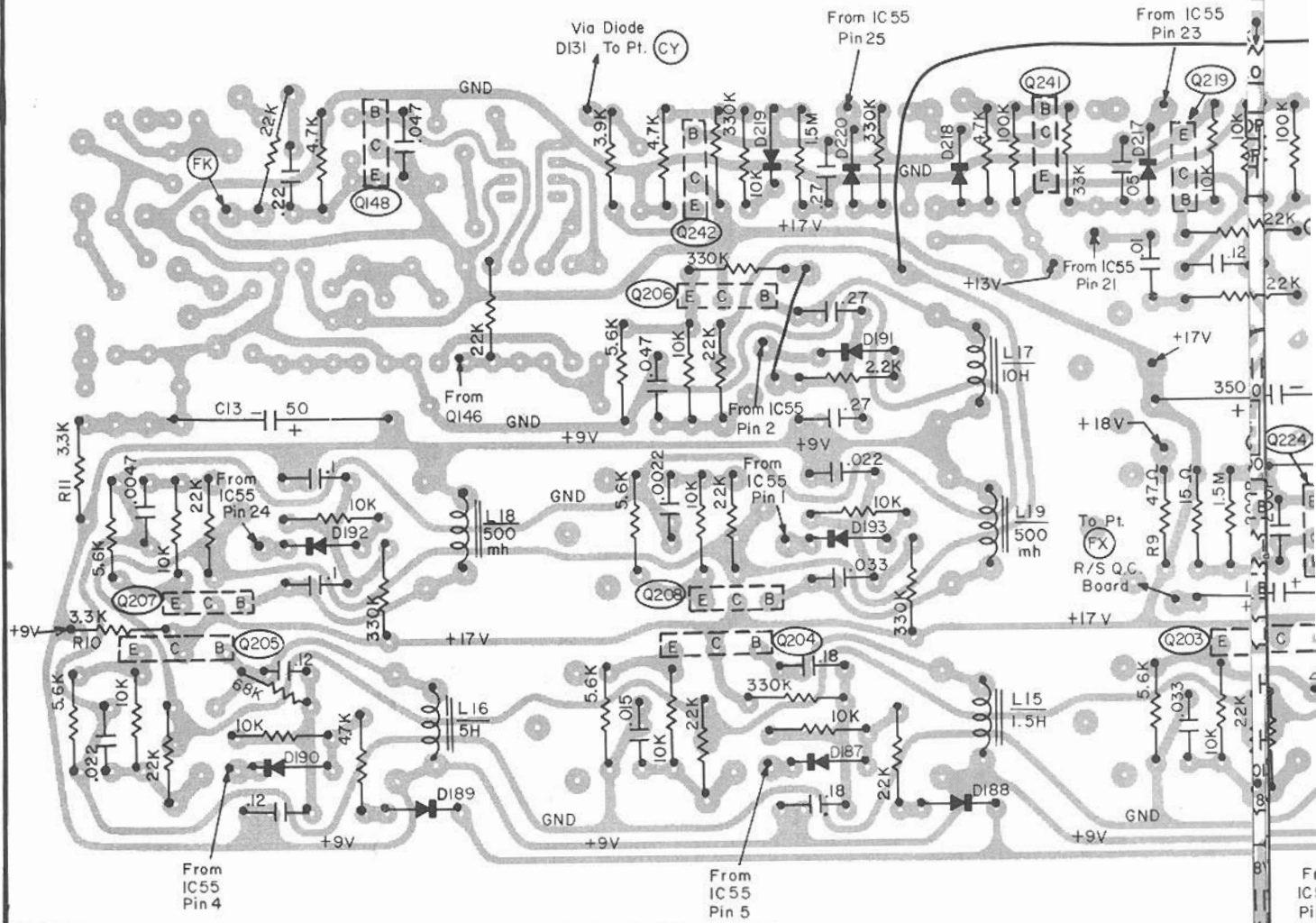


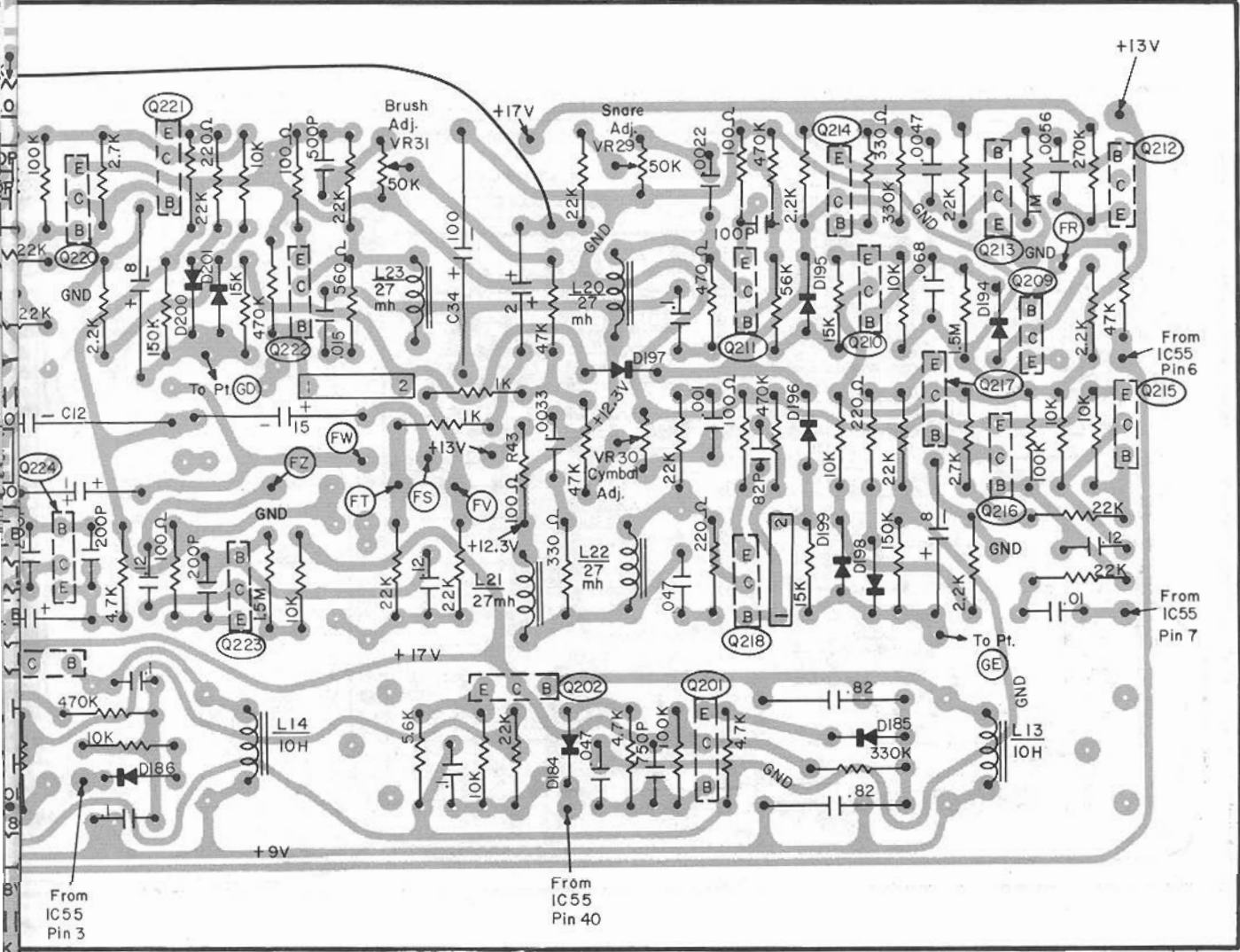
$$\begin{array}{r} 123 \\ 10 \\ \hline = 32 \\ 174 \end{array}$$


BOARD

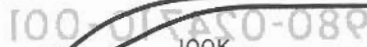
"J" Nos Indicate on board jumpers



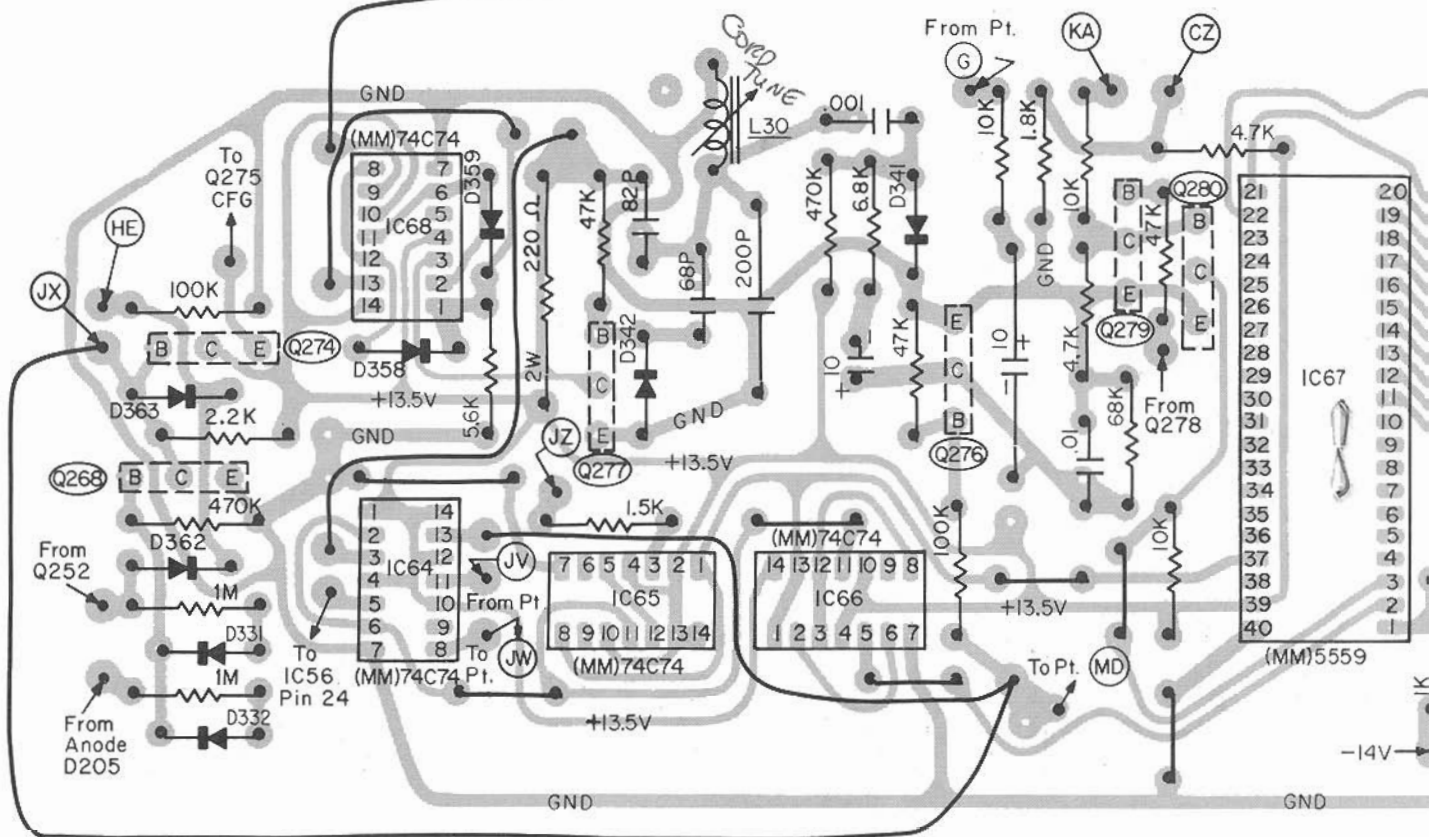




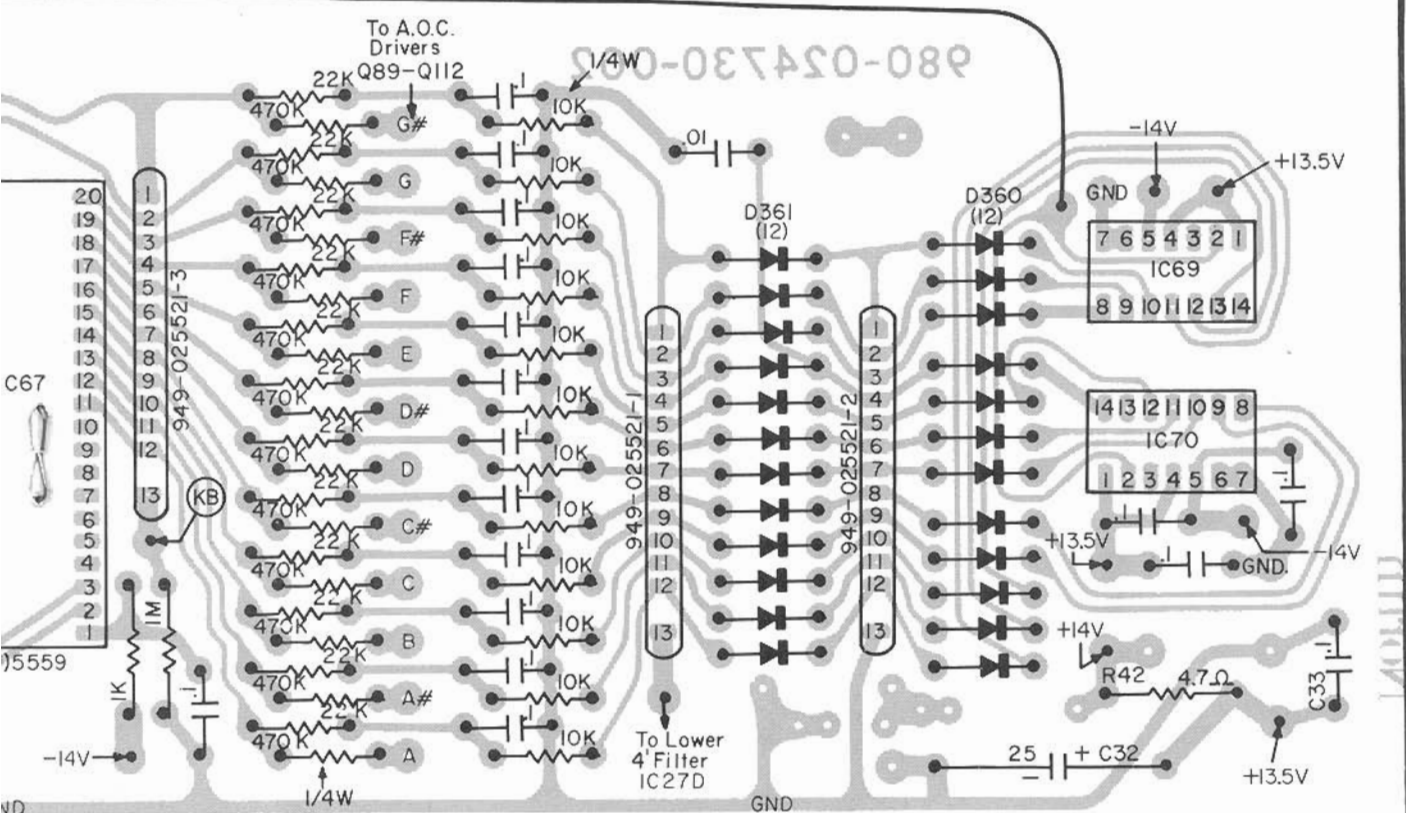
100-017450-089



MAGIC GENIE, 4¹ T.O.S.,

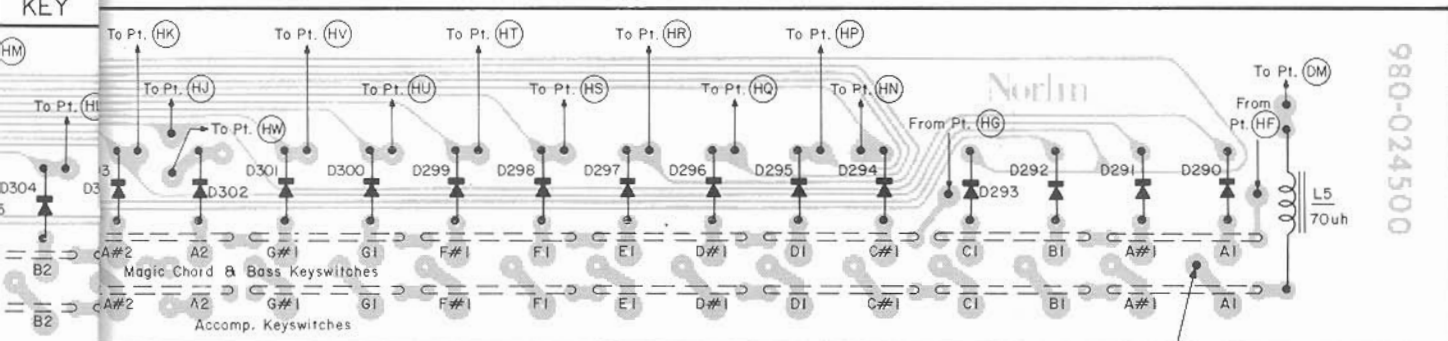


S., A.O.C. & OSC. BOARD



KEY

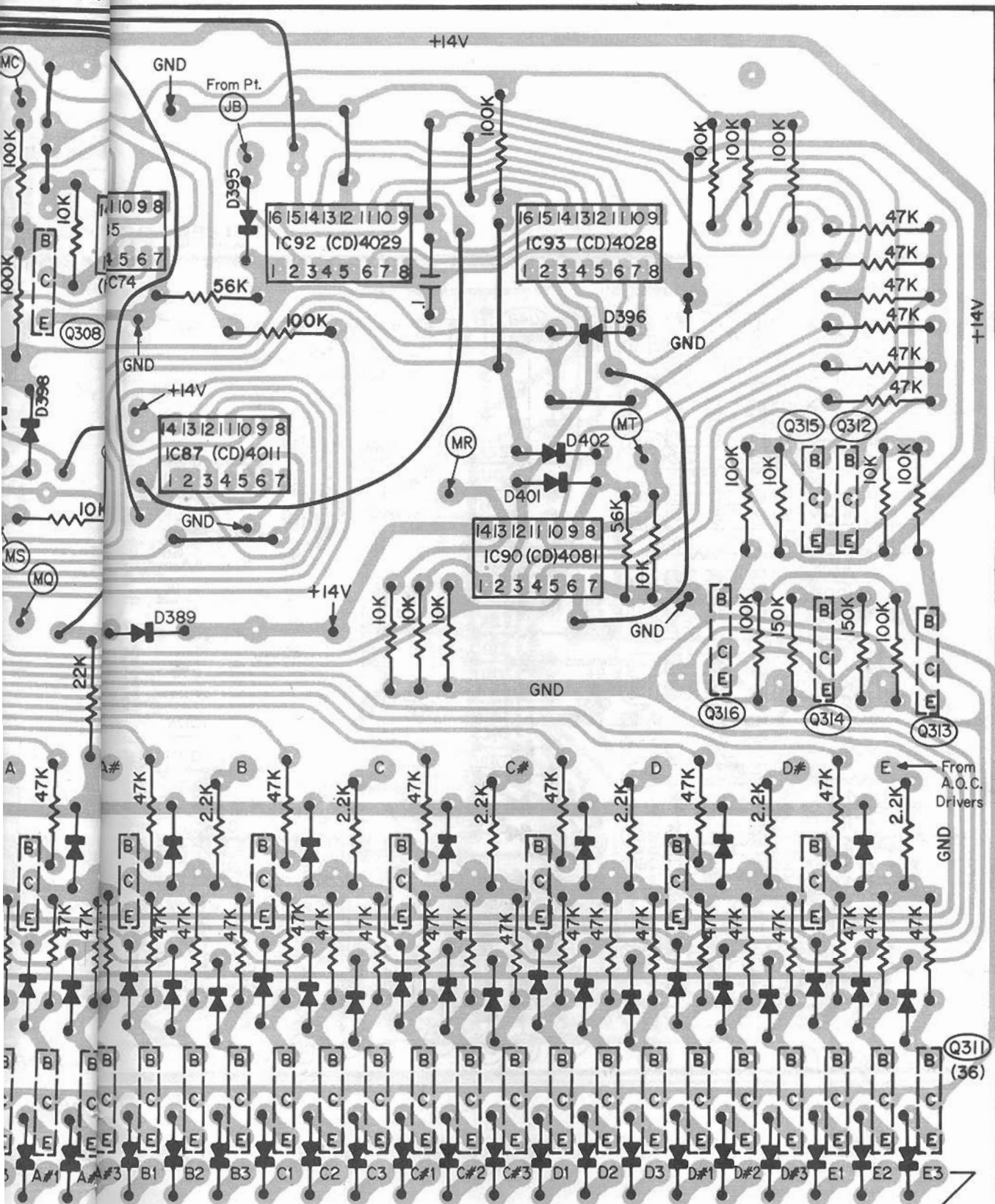
SWITCH BOARD



Dotted Lines Indicate
Keyswitch Buss Bars

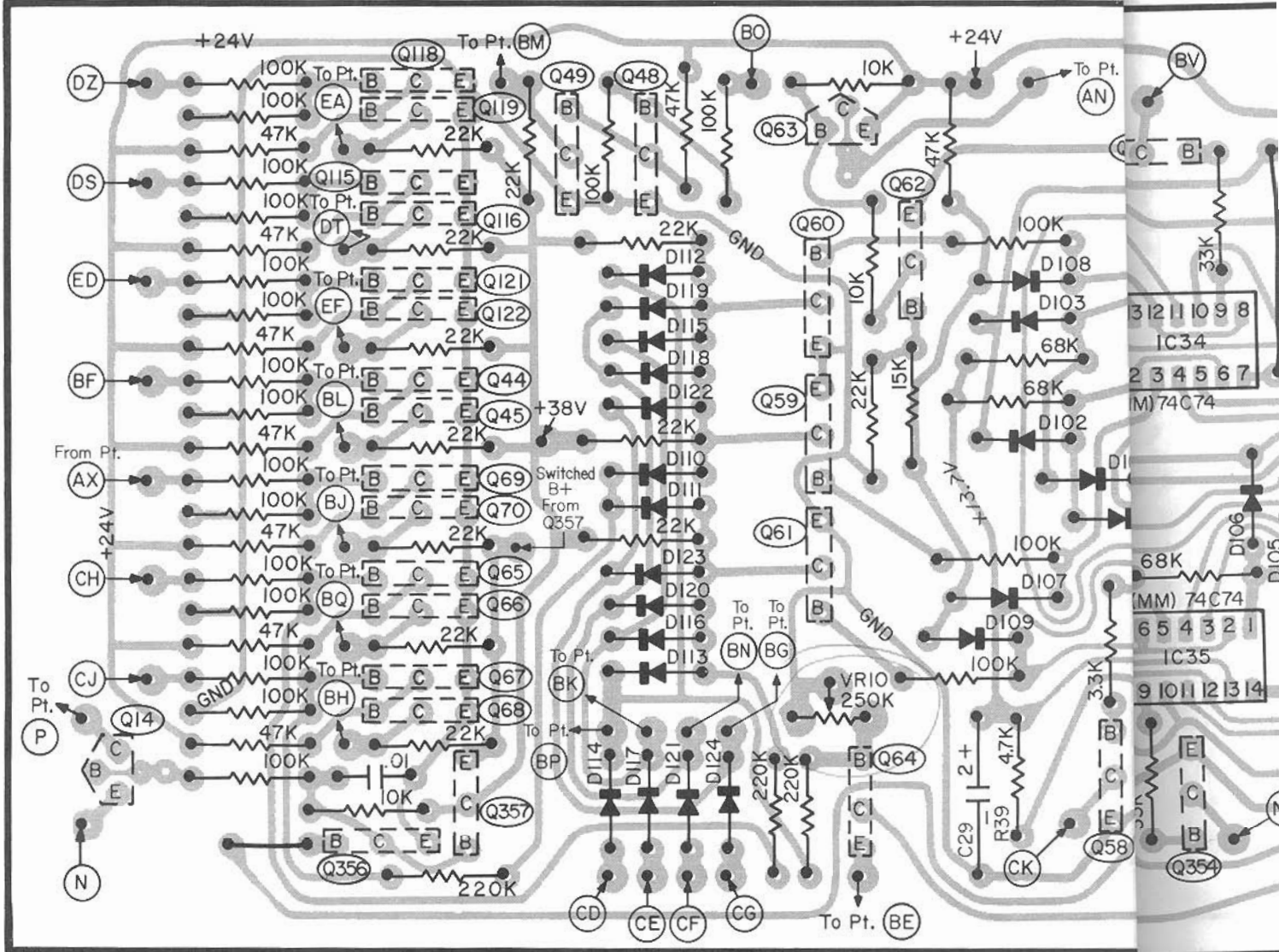
Outputs to Lower
D.C. Keying Circuits
on A.O.C. & Keyer Board





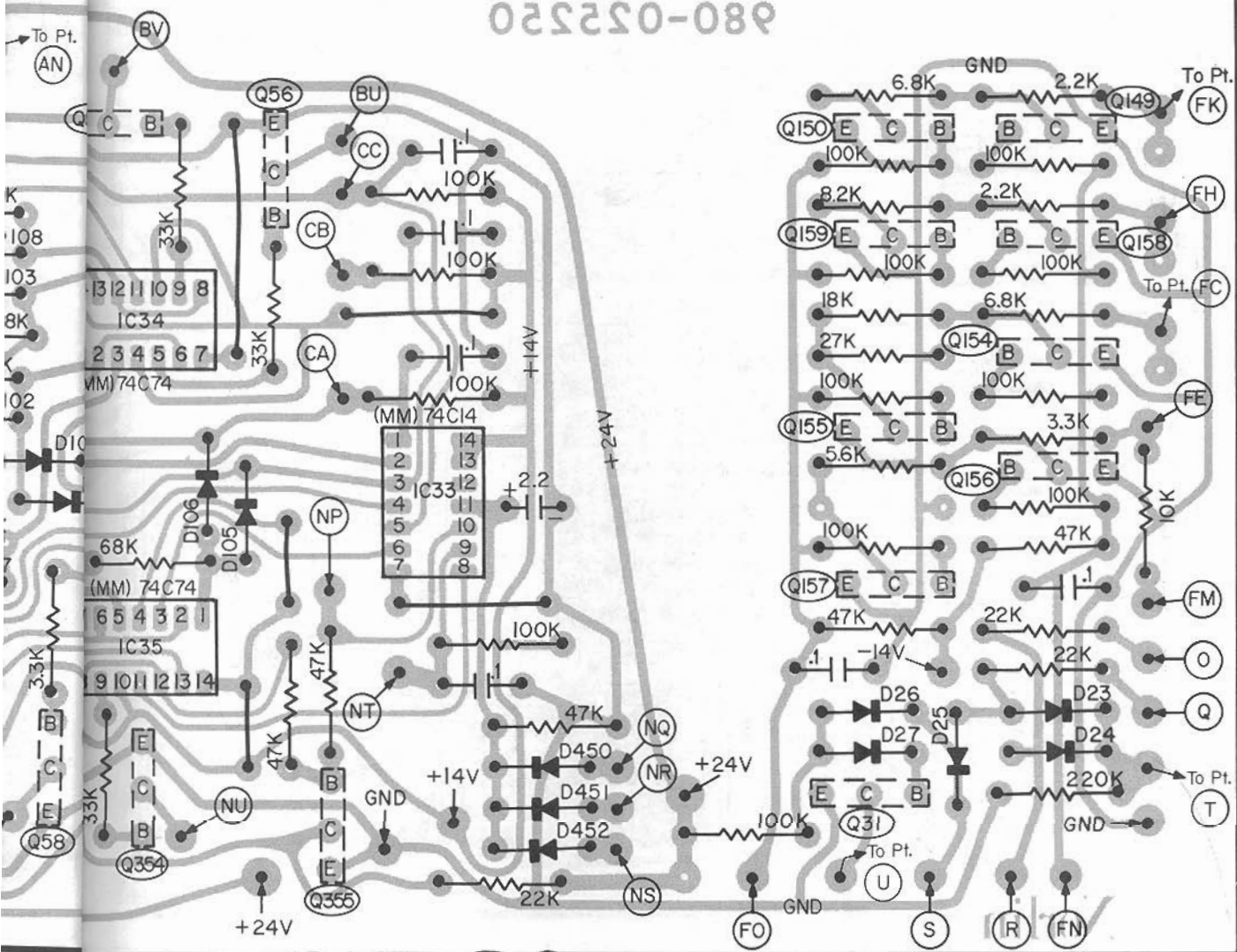
980-054250-003

FLUTE PRF BOARD

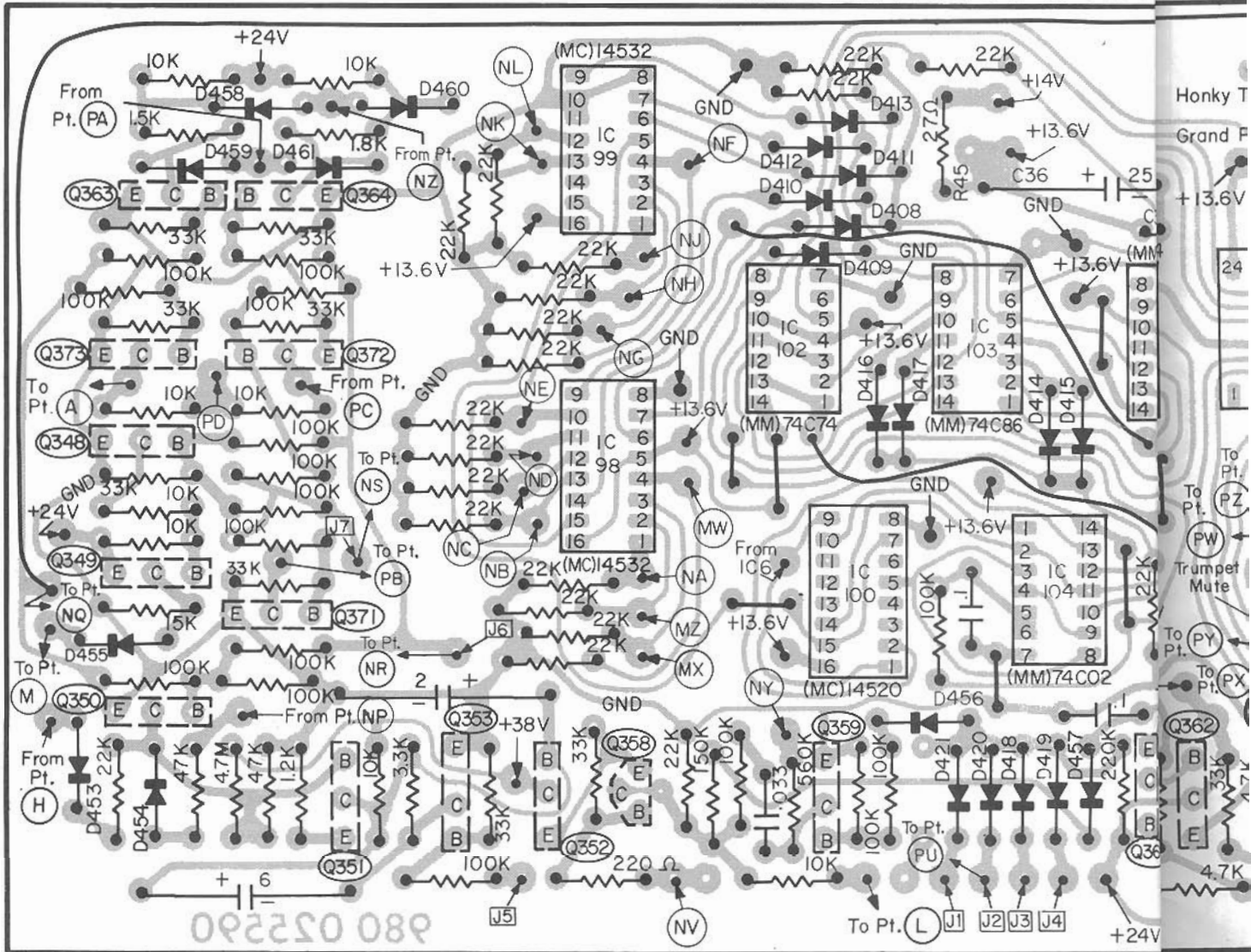


PRF BOARD

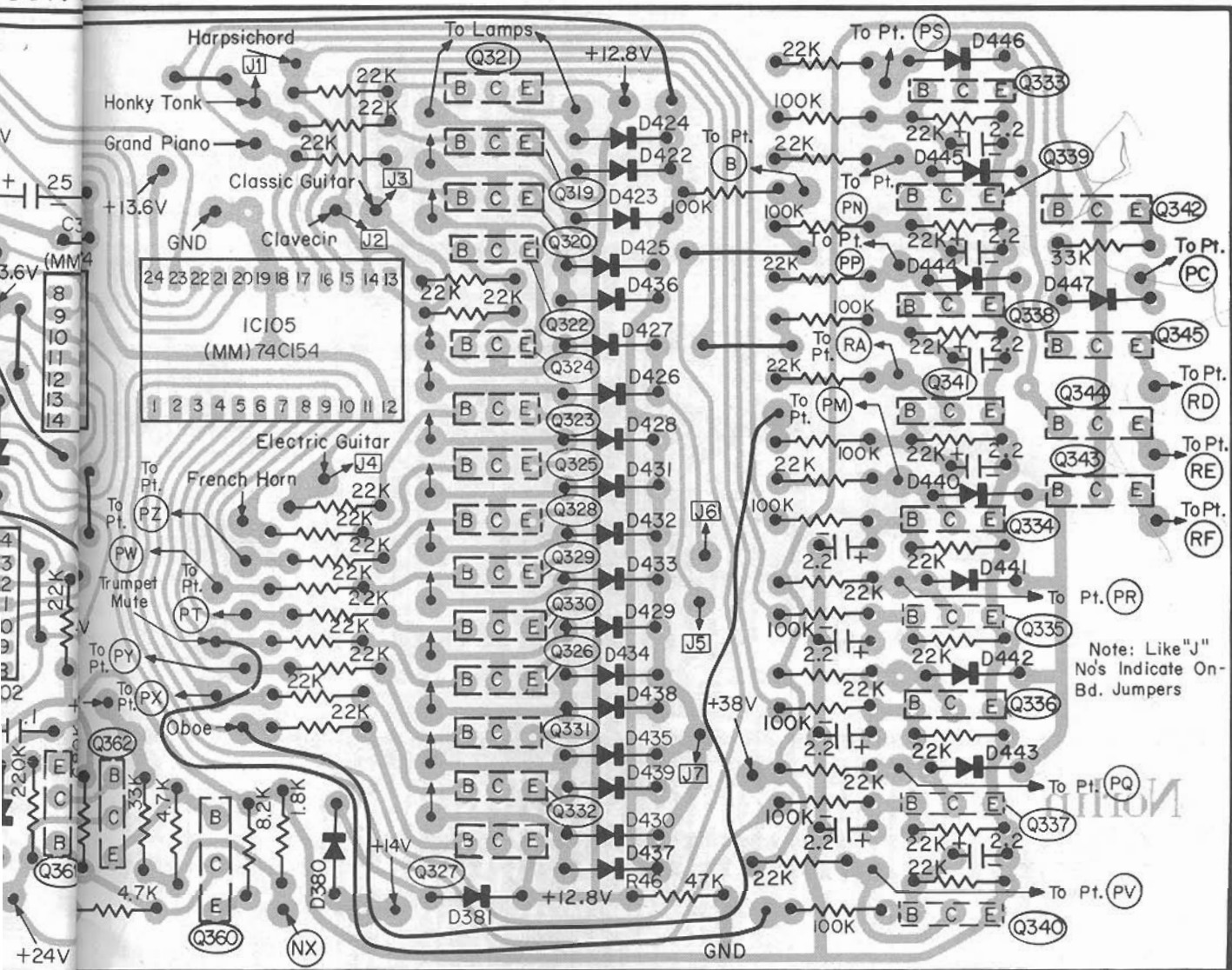
980-052520

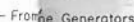


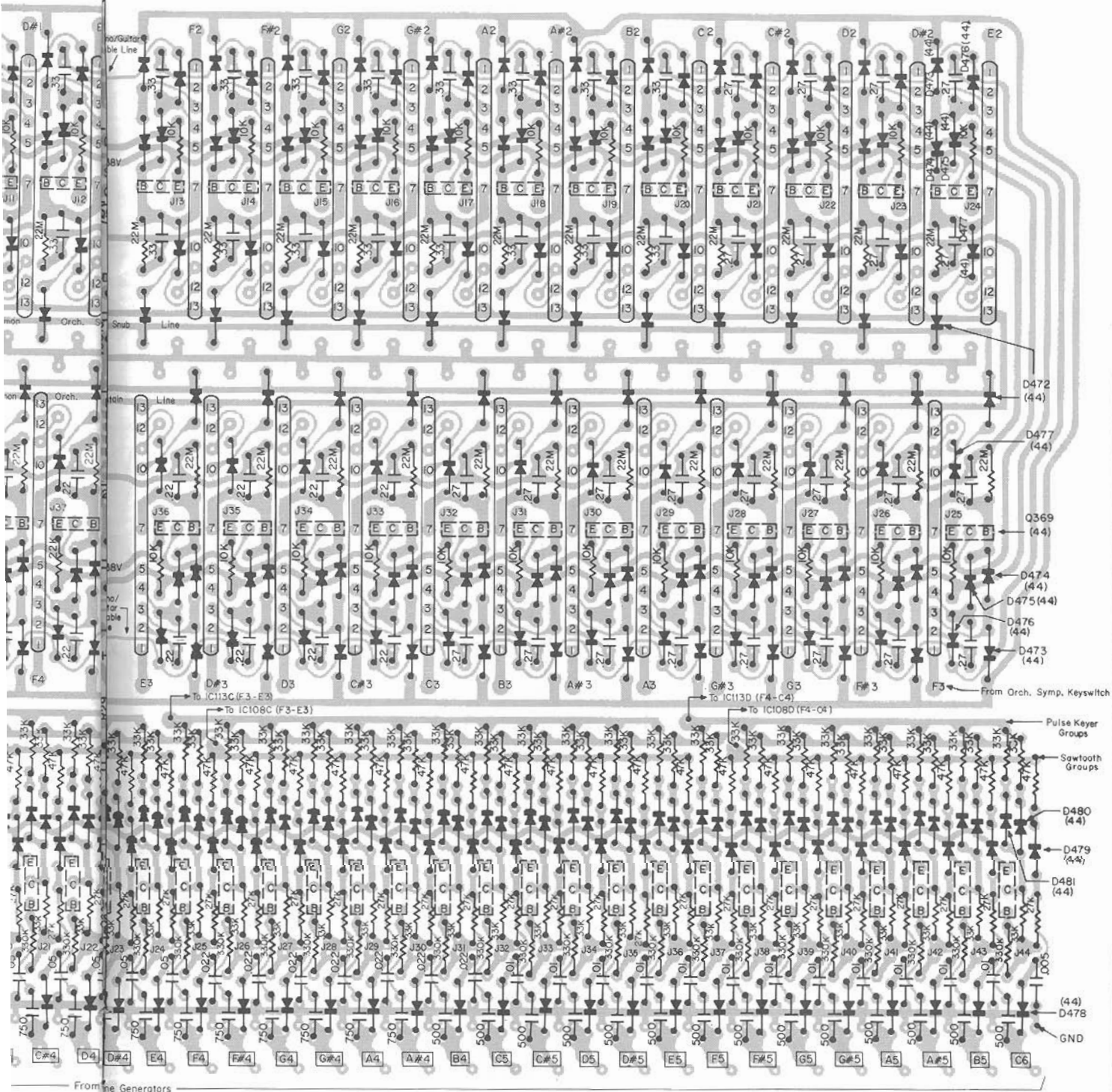
ORCH. SYMP. LATCH & CONL BOA



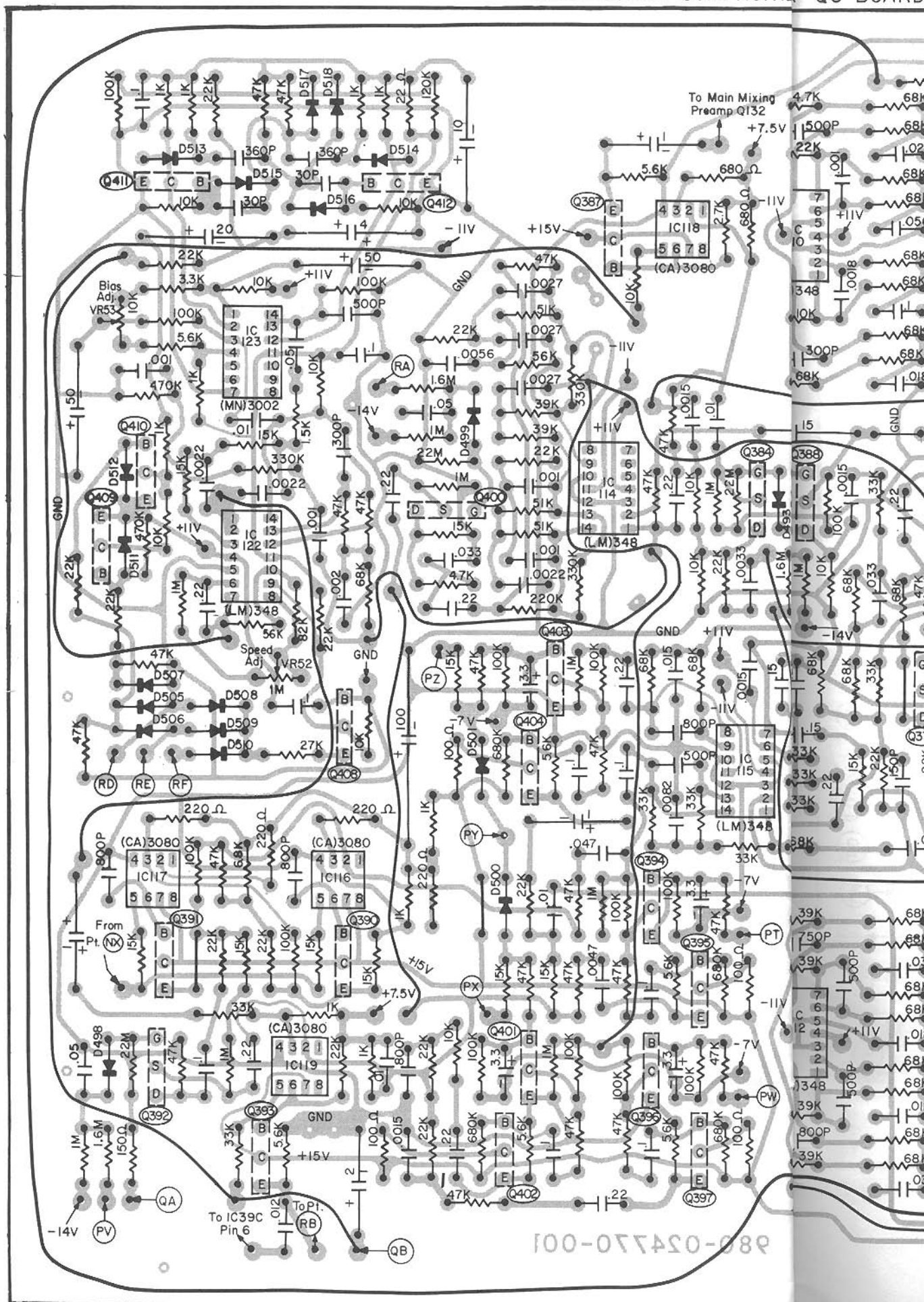
CON'L BOARD





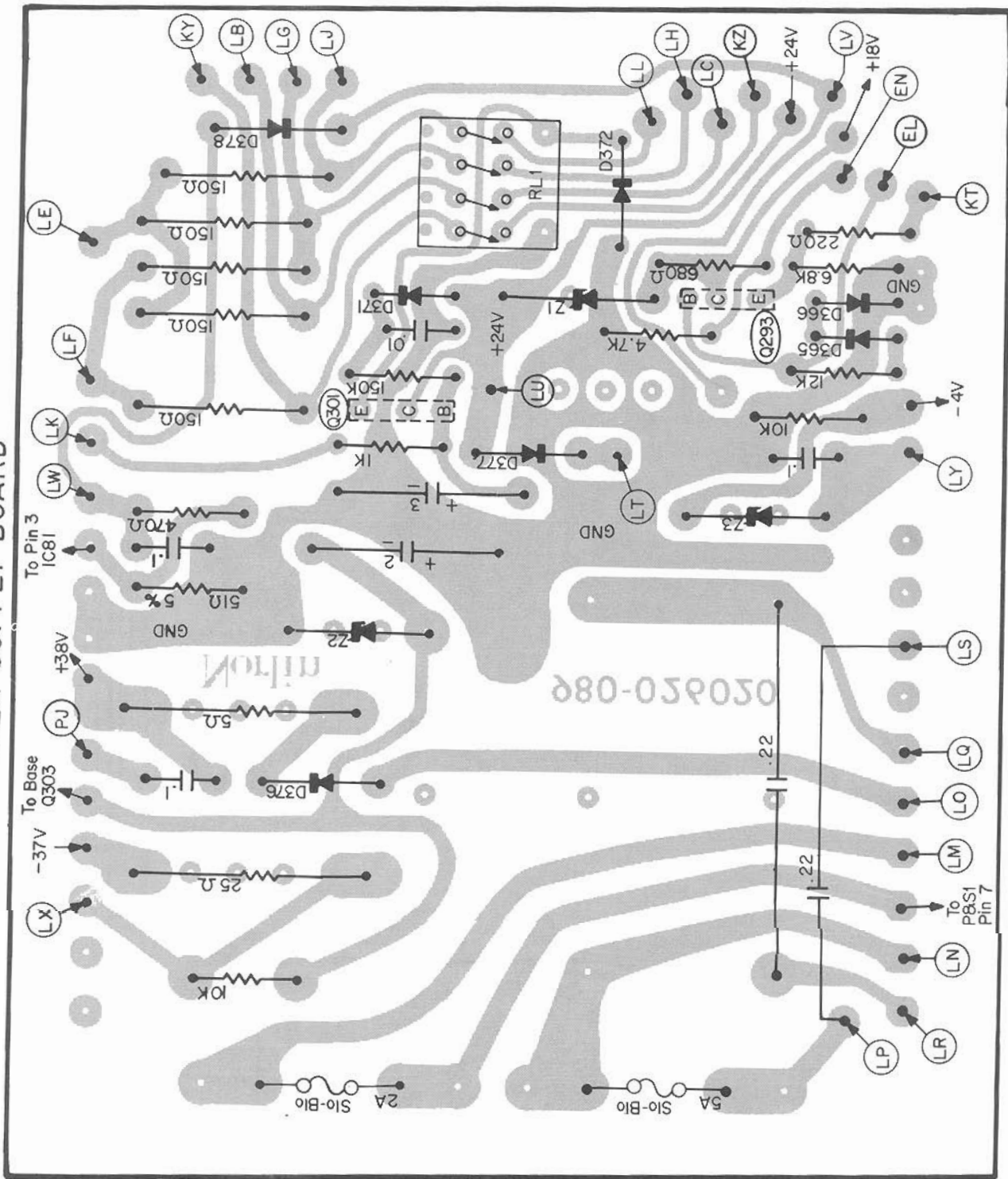


005250-089





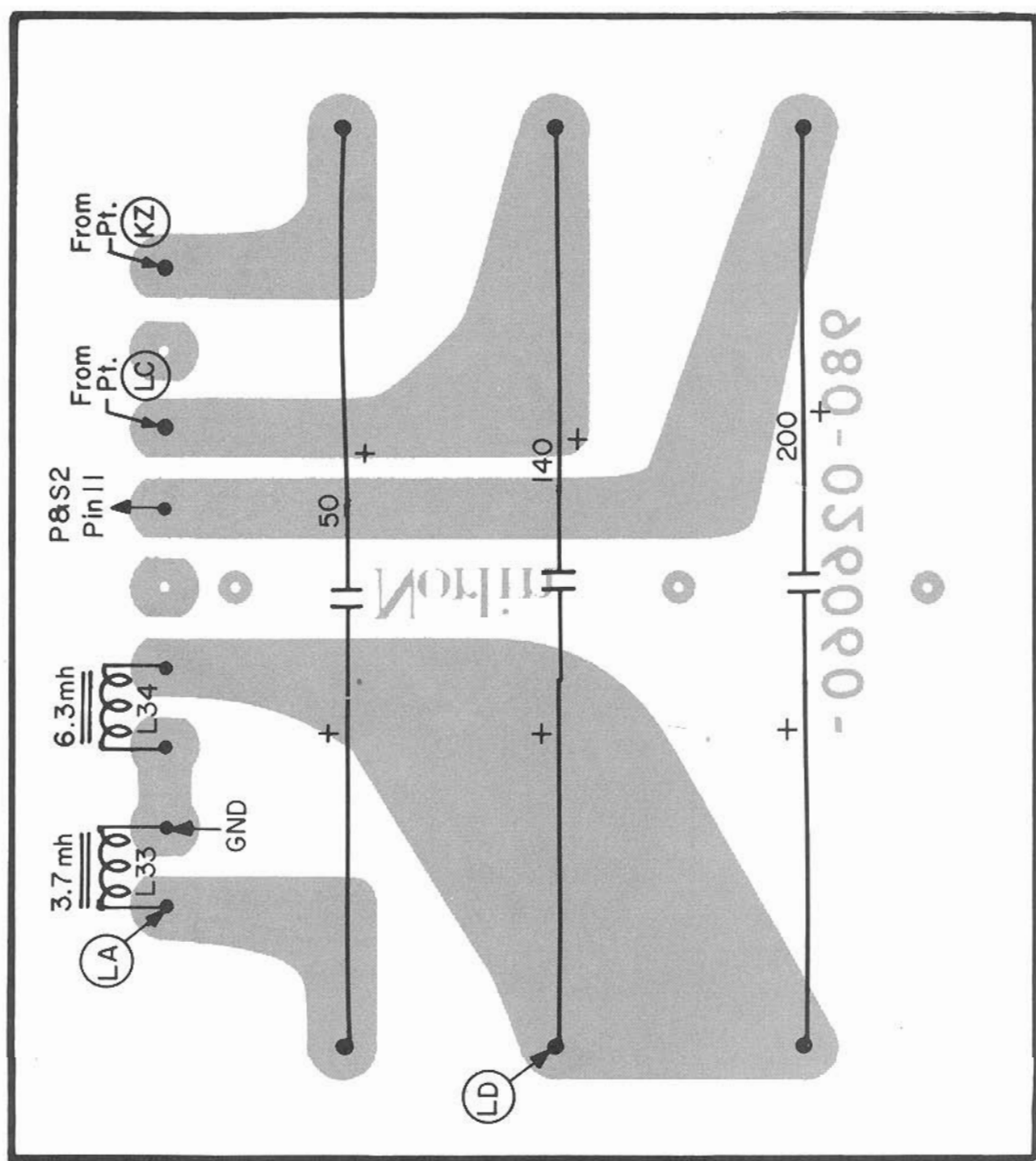
POWER SUPPLY BOARD



(1 Of 4 Typical Amps)

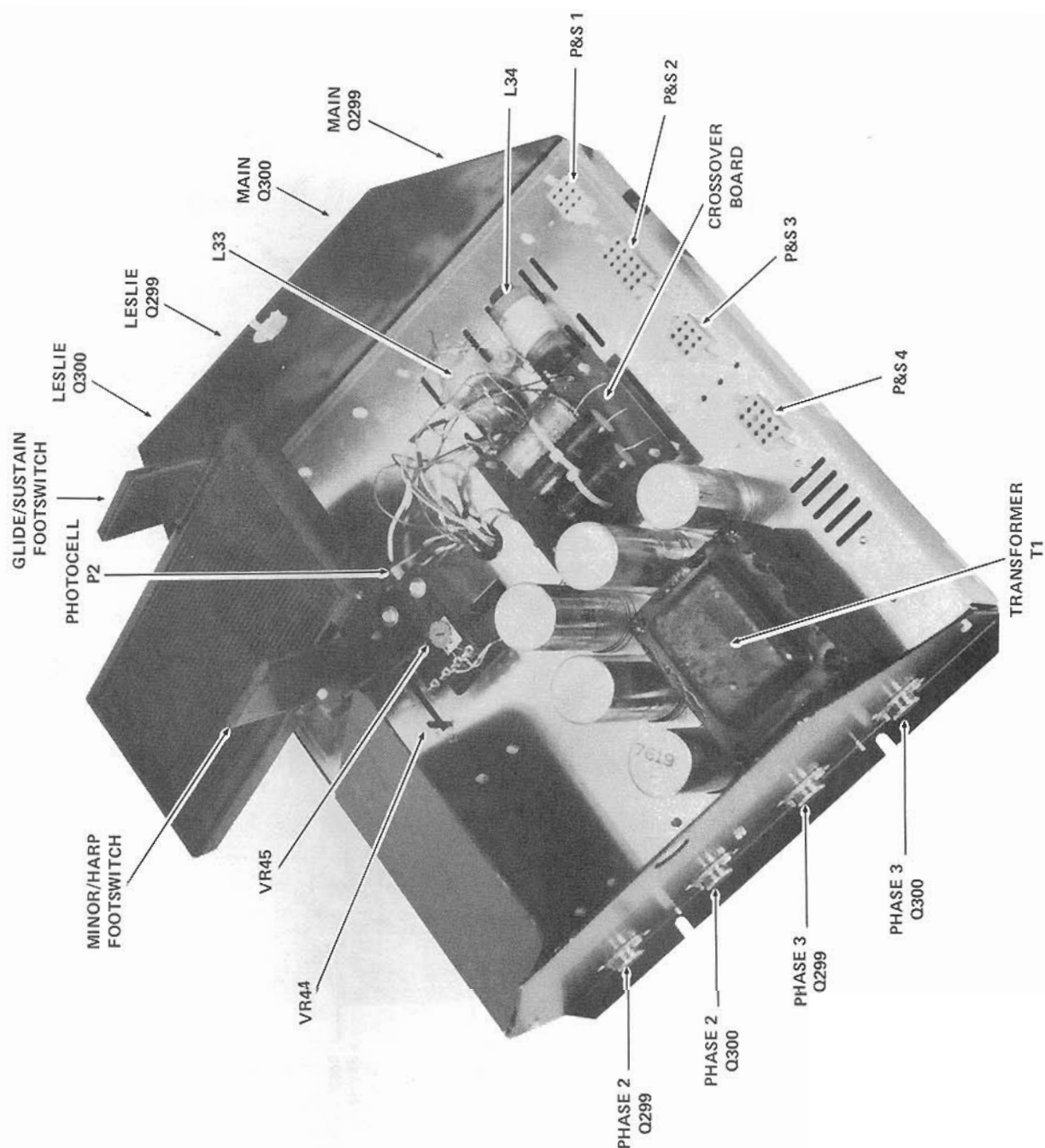


CROSSOVER BOARD



AMPLIFIER/POWER SUPPLY & EXPRESSION PEDAL ASSEMBLY

(Top View)



AMPLIFIER/POWER SUPPLY & EXPRESSION PEDAL ASSEMBLY

Bottom View

